

# ALFA420E1HDS

Family	Ovens
Subfamily	Convection oven 4 trays EN 600x400 mm or GN1/1
Oven type	Fan with humidification
Oven control	Electronic
Trays capacity	4 trays 600x400 mm - GN1/1
Power supply	400 V 3N~ / 10 A / 6,9 kW / 50-60 Hz
Other electrical connection	230 V~ / 30 A / 6.9 kW / 50-60 Hz
Steam generation	Direct
WiFi connection	Not available
Maximum depth with open door	1145 mm
Adjustable feet	Yes
Net weight	63.000 kg
Product dimensions WxDxH	798x747x563 mm
EAN code	8017709322939



## Distribution

<b>Solutions</b>	Bars/Cafes; Hotels; Restaurants/Catering; Bakery/Pastry making; Industrial pastry&bakery laboratories; Butcher's shops; QSR	<b>Suggested for</b>	Bars/Cafes
------------------	--	----------------------	------------

## Aesthetics





<b>Colour</b>	Stainless steel	<b>Digit display color</b>	White
<b>Door with stainless steel stripes</b>	Yes	<b>Front panel</b>	Yes
<b>Display type</b>	Yes	<b>Logo</b>	Smeg printed

## Controls

<b>Recipes number</b>	100	<b>Cooking steps</b>	3 + pre-heating
<b>Timer setting range</b>	1 minute -99h + endless	<b>Haccp data</b>	Scheduled start H/12

## Programs / Functions

### Backing functions

-  Fan forced
-  Fan forced with humidification
-  Core temperature probe baking
-  Core probe + Δt

## Adjustable fan speed:



Adjustable fan speed

## Options

Solutions K4610X

## Construction

<b>Oven materials</b>	Ever Clean enamel	<b>Water injection on each fan</b>	Yes
<b>Cavity dimensions (lxdxh)</b>	672x437x340mm	<b>Humidification levels</b>	3 + manual
<b>Gross volume</b>	670x560x420mm	<b>Exhaust position</b>	Back
<b>Net volume</b>	670x560x420mm	<b>Components cooling system</b>	Yes
<b>Internal net volume</b>	670x560x420mm	<b>Timer type</b>	Electronic timer
<b>Cavity material</b>	Stainless steel	<b>Temperature range</b>	50-280°C
<b>Shelves number</b>	4	<b>End cooking signal</b>	Yes
<b>Tray frame support</b>	Chrome	<b>Manual reset safety thermostat</b>	Yes
<b>Shelves distance</b>	77 mm	<b>Predisposition for core probe Δ t</b>	Yes
<b>Door construction</b>	Double glass	<b>Removable deflector</b>	Yes
<b>Door opening</b>	Tilting	<b>Lighting</b>	2 LED lamps
<b>Handle type</b>	Smeg	<b>Light power</b>	40 W
<b>Openable glass</b>	Removable	<b>USB port</b>	Si
<b>Fan type and number</b>	2 contrarotating fans with time direction reversal	<b>Water load pipe</b>	Yes
<b>Engine speed</b>	200W	<b>Power cable length</b>	170 cm
<b>Engine speed</b>	2	<b>Back panel</b>	Galvanized
<b>Max standard speed motor rpm</b>	2	<b>IPX protection</b>	Scheduled start H/12
<b>Low speed rpm</b>	2		



## Not included accessories



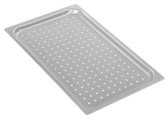
**3805**

Flat chrome-plated wire grid



**3927**

Air flow reducer kit



**TF11XH2**

Perforated aluminium GN1/1 tray for Galileo professional



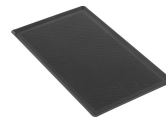
**3743**

Flat aluminium tray



**RGN11-420-2**

Support kit for grids or flat trays GN1/1 suitable for ALFA420/425/410 models



**TMF11TH2**

GN 1/1 non-sticking microperforated tray

**SVRPP625**

Conjunction kit for 2 ovens series 625/420 and hood



**T11XH20**

2cm height aluminium GN1/1 tray for Galileo professional



**SVRPP420-625**

Connector kit for two stacked ALFA420+420 or ALFA420+625 models and hood



**T11XH65**

6,5cm height aluminium GN1/1 tray for Galileo professional



**T11TH20**

2cm height GN1/1 non-stick tray for Galileo professional

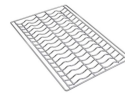
**KITSC**

Lower and upper shelf kit



**3751**

Flat perforated aluminium tray



**3810**

Corrugated grid for baguettes

**SVRPP420**

Conjunction kit between 2 ovens series 420/425 and hood



**T11TH40**

4cm height GN1/1 non-stick tray for Galileo professional

## Symbols glossary (TT)

---



...



Core probe +  $\Delta t$



...



...



Double speed fan