



Back Bar Chiller

Instruction manual



Model:

**GL001-A/GL002-A/GL003-A/GL004-A/GL006-A/GL007-A/GL008-A/
GL009-A/GL010-A/GL011-A/GL012-A/GL013-A/GL014-A/GL016-A/
GL015-A/GL017-A/GE997-A/GE998-A/GE999-A**

Safety Instructions

- Position on a flat, stable surface.
- A service agent/qualified technician should carry out installation and any repairs if required. Do not remove any components or service panels on this product.
- **In Queensland the service agent/qualified technician MUST hold a Gas Work Authorisation or License for hydrocarbon refrigerants if the appliance gas system is being opened or charged.**
- Consult Local and National Standards to comply with the following:
 - Health and Safety at Work Legislation
 - Fire Precautions
 - Wiring Regulations
 - Building Regulations
- DO NOT immerse in water, or use steam/jet washers to clean the unit.
- DO NOT cover the appliance when it is operating.
- DO NOT store food in the appliance.
- Always carry, store and handle the appliance in a vertical position.
- Never tilt the appliance more than 45° from the vertical.
- Not suitable for outdoor use.
- Keep all packaging away from children. Dispose of the packaging in accordance with the regulations of local authorities.
- If the power cord is damaged, it must be replaced by a POLAR agent or a recommended qualified technician in order to avoid a hazard.
- This appliance is not intended for use by persons (including children) with reduced physical, sensory or mental capabilities, or lack of experience and knowledge, unless they have been given supervision or instruction concerning the use of the appliance by a person responsible for their safety.

- Polar recommend that this appliance should be periodically tested (at least annually) by a Competent Person. Testing should include, but not be limited to: Visual Inspection, Polarity Test, Earth Continuity, Insulation Continuity and Functional Testing.



Caution Risk of Fire

- Do not store explosive substances such as aerosol cans with a flammable propellant in this appliance.

Warning: Keep all ventilation openings clear of obstruction. Unit should not be boxed in without adequate ventilation.

- **To comply with AS/NZS 60079.10.1:2009: Ensure there are not sources of ignition in any area where refrigerant could gather in the event of a leak.**
- **Electrical equipment should not be placed under the vent or where refrigerant could gather in the event of a leak.**
- **Warning:** Do not use mechanical devices or other means to accelerate the defrosting process, other than those recommended by the manufacturer.
- **Warning:** Do not damage the refrigerant circuit.
- **Warning:** Do not use electrical appliances inside the food storage compartments of the appliance.

Product Description

- GL001-A/GL007-A/GL011-A/GL015-A/GE997-A: Single Door Back Bar Chiller
- GL002-A/GL008-A/GL012-A/GL016-A/GE998-A: Double Door Back Bar Chiller
- GL003-A/GL010-A: Double Door (Sliding) Back Bar Chiller
- GL004-A/GL009-A/GL014-A/GL017-A/GE999-A: Three Door Back Bar Chiller
- GL006-A/GL013-A: Three Door Back Bar Chiller

Introduction

Please take a few moments to carefully read through this manual. Correct maintenance and operation of this machine will provide the best possible performance from your POLAR product.

Pack Contents

The following is included:

ALL MODELS

- POLAR Back Bar Chiller
- Key
- Instruction manual
- 1 DOOR MODEL: 2 adjustable shelves
- 2 DOOR MODEL: 4 adjustable shelves
- 3 DOOR MODEL: 6 adjustable shelves

POLAR prides itself on quality and service, ensuring that at the time of unpacking the contents are supplied fully functional and free of damage.

Should you find any damage as a result of transit, please contact your POLAR dealer immediately.

Installation

Note: Not for use in vans or trailers, food trucks or similar vehicles.

If the unit has not been stored or moved in an upright position, let it stand upright for approximately 12 hours before operation. If in doubt allow to stand.

1. Remove the appliance from the packaging and the protective film from all surfaces.
2. Avoid positioning the appliance in direct sunlight or damp areas.
3. To optimize performance and longevity, ensure a minimum clearance of 2.5cm is maintained between the unit and walls and other objects, with a minimum 20cm clearance on the top. **NEVER LOCATE NEXT TO A HEAT SOURCE.**
4. Insert the slide-out shelf/shelves at the desired levels and place the smaller shelf/shelves on the floor of the appliance.
5. If necessary, adjust the screw feet of the appliance to make it level.

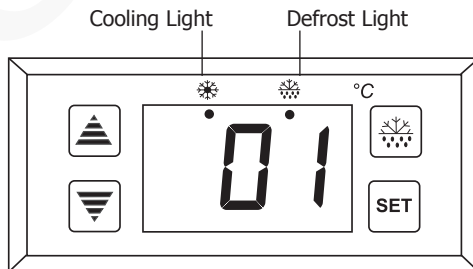


Note: Before using the appliance for the first time, clean the shelves and interior with soapy water then dry well.

Operation

Control Panel

The control panel is located below the doors on the front of the appliance.



Turn On

1. Close the door of the appliance.
2. Connect the appliance to a mains power supply.

3. Turn the light switches On [I] or Off [O] as desired.



Note: The Cooling Light is illuminated when the appliance is chilling the interior cabinet.

Set the Operating Temperature

1. Press the **SET** button. The display will flash.
2. Press the or buttons to display the required temperature.
3. Press the **SET** button to store the temperature.

Manual Defrost

- POLAR Back Bar Chillers feature an automatic defrost. However, should the appliance require an additional defrost period press and hold the and **SET** button for 6 seconds.
- Automatic defrost cycles are every 6 hours and last 20 minutes (factory defaults).
- To stop the Defrost press and hold the and **SET** button for 6 seconds.



Note: If a manual defrost is started this resets the automatic defrost timer. During defrost periods the Defrost light is illuminated.

Cleaning, Care & Maintenance

- **Switch off and disconnect from the power supply before cleaning**
- Clean the interior of the appliance as often as possible.
- Do not use abrasive cleaning agents. These can leave harmful residues.
- Always wipe dry after cleaning.

Condensation and ice will form with frequent and prolonged opening of the doors. Operating outside of the recommend temperature range and placing next to a heat source will also increase the amount of ice and internal/external condensation. If external condensation occurs wipe the surface down with a cloth. Excessive ice will result in longer running times that will increase energy consumption and increase the deterioration of components.

Cleaning the Condenser

Periodically cleaning the condenser can extend the life of the appliance. The condenser is located at the back of the appliance.



Note: Use a soft brush or vacuum cleaner to clean the fins of the condenser, taking care not to damage the fins.

Removing the Doors (Sliding Doors only)

When cleaning the appliance or replacing the lamp it may be necessary to remove the doors to improve access.

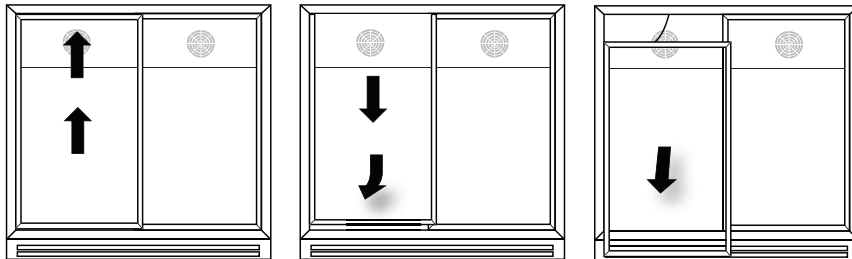
To remove the doors:

1. Holding the sides of the first door, lift the door into the upper runner.
2. Pull the bottom of the door out and down simultaneously so the door clears the bottom runner.



Note: The automatic door-closing system means that the doors are attached to the appliance by a cord. Do not break or remove this cord.

3. Place the door to the side of the appliance.
4. Repeat for the remaining doors.
5. To replace the doors, slot them into the upper runner and then push the bottom of the door in and down to slot it in to the bottom runner.



Troubleshooting

A qualified technician must carry out repairs if required.

Fault	Probable Cause	Solution
The appliance is not working	The unit is not switched on	Check the unit is plugged in correctly and switched on
	Plug or lead is damaged	Replace Plug or lead
	Mains power supply fault	Check mains power supply
The appliance turns on, but the temperature is too high/low	Condenser blocked with dust	Clean Condenser
	Doors are not shut properly	Check doors are shut and seals are not damaged
	Appliance is located near a heat source or air flow to the condenser is being interrupted	Move the appliance to a more suitable location
	Ambient temperature is too high	Increase ventilation or move appliance to a cooler position
	Insufficient airflow to the fans	Remove any blockages to the fans
	Appliance is overloaded	Reduce the amount stored in the appliance
	Factory default parameters adjusted	Call POLAR agent or qualified Technician
The appliance is unusually loud	Appliance is touching a neighbouring object	Check installation position and change if necessary
	Appliance has not been installed in a level or stable position	Check installation position and change if necessary

Technical Specifications

Note: Due to our continuing program of research and development, the specifications herein may subject to change without notice.

Model	Voltage	Power	Current	Temperature Range	Capacity (Litres)	Refrigerant	Dimensions H x W x D mm	Weight (kg)	Max. load of each shelf
GL001-A	230V 50Hz	180W	1.25A	2°C to 10°C	138	R600a	900 x 600 x 520	48	28kg
GL002-A	230V 50Hz	230W	1.66A	2°C to 10°C	208	R600a	900 x 900 x 520	62	25kg
GL003-A	230V 50Hz	230W	1.66A	2°C to 10°C	208	R600a	900 x 900 x 520	62	25kg
GL004-A	230V 50Hz	280W	1.66A	2°C to 10°C	330	R600a	900 x 1350 x 520	80	25kg
GL006-A	230V 50Hz	300W	1.76A	2°C to 10°C	330	R600a	900 x 1350 x 520	80	25kg
GL007-A	230V 50Hz	180W	1.25A	2°C to 10°C	138	R600a	900 x 600 x 520	48	28kg
GL008-A	230V 50Hz	230W	1.66A	2°C to 10°C	208	R600a	900 x 900 x 520	62	25kg
GL009-A	230V 50Hz	280W	1.66A	2°C to 10°C	330	R600a	900 x 1350 x 520	80	25kg
GL010-A	230V 50Hz	230W	1.66A	2°C to 10°C	198	R600a	850 X 900 X 520	62	25kg
GL011-A	230V 50Hz	180W	1.25A	2°C to 10°C	128	R600a	850 X 600 X 520	48	28kg
GL012-A	230V 50Hz	230W	1.66A	2°C to 10°C	198	R600a	850 X 900 X 520	62	25kg
GL013-A	230V 50Hz	300W	1.76A	2°C to 10°C	320	R600a	850 X 1350 X 520	80	25kg
GL014-A	230V 50Hz	280W	1.66A	2°C to 10°C	320	R600a	850 X 1350 X 520	80	25kg
GL016-A	230V 50Hz	230W	1.66A	2°C to 10°C	208	R600a	900 x 900 x 520	55	25kg
GL015-A	230V 50Hz	180W	1.25A	2°C to 10°C	138	R600a	900 X 600 X 520	40	28kg
GL017-A	230V 50Hz	280W	1.66A	2°C to 10°C	330	R600a	900 X 1350 X 520	70	25kg
GE997-A	230V 50Hz	180W	1.25A	2°C to 10°C	128	R600a	850 X 600 X 520	38	28kg
GE998-A	230V 50Hz	230W	1.66A	2°C to 10°C	198	R600a	850 X 900 X 520	53	25kg
GE999-A	230V 50Hz	280W	1.66A	2°C to 10°C	320	R600a	850 X 1350 X 520	68	25kg

Electrical Wiring

The plug is to be connected to a suitable mains socket.

POLAR appliances are wired as follows:

- Live wire (coloured brown) to terminal marked L
- Neutral wire (coloured blue) to terminal marked N
- Earth wire (coloured green/yellow) to terminal marked E

This appliance must be earthed.



If in doubt consult a qualified electrician.

Electrical isolation points must be kept clear of any obstructions. In the event of any emergency disconnection being required they must be readily accessible.

Compliance

The product must not be disposed of as household waste. To help prevent possible harm to human health and/or the environment, the product must be disposed of in an approved and environmentally safe recycling process. For further information on how to dispose of this product correctly, contact the product supplier, or the local authority responsible for waste disposal in your area.

POLAR parts have undergone strict product testing in order to comply with regulatory standards and specifications set by international, independent, and federal authorities.

POLAR products have been approved to carry the following symbol:



All rights reserved. No part of these instructions may be produced or transmitted in any form or by any means, electronic, mechanical, photocopying, recording or otherwise, without the prior written permission of POLAR.

Every effort is made to ensure all details are correct at the time of going to press, however, POLAR reserve the right to change specifications without notice.

DECLARATION OF CONFORMITY

• Conformiteitsverklaring • Déclaration de conformité • Konformitätserklärung • Dichiarazione di conformità •
• Declaración de conformidad

Equipment Type • Uitrustingstype • Type d'équipement • Gerätetyp • Tipo di apparecchiatura • Tipo de equipo	Model • Modèle • Modell • Modello • Modelo
Back Bar Cooler: 1. Single Solid Hinged Door 850mm – Black† 2. Double Solid Hinged Door 850mm – Black† 3. Triple Solid Hinged Door 850mm – Black† 4. Single Door – Black* 5. Double Hinged Door – Black* 6. Double Sliding Door – Black* 7. Triple Hinged Door – Black* 8. Double Hinged Door - St/St exterior* 9. Triple Sliding Door – Black* 10. Single Door - St/St exterior*	1. GE997 (& -E -A) 2. GE998 (& -E -A) 3. GE999 (& -E -A) 4. GL001 (& -E -A) 5. GL002 (& -E -A) 6. GL003 (& -E -A) 7. GL004 (& -E -A) 8. GL008 (& -E -A) 9. GL006 (& -E -A) 10. GL007 (& -E -A) 11. Triple Hinged Door - St/St exterior* 12. Double Sliding Door 850mm – Black* 13. Single Hinged Door 850mm – Black* 14. Double Hinged Door 850mm – Black* 15. Triple Sliding Door 850mm – Black* 16. Triple Hinged Door 850mm – Black* 17. Single Hinged Solid Door - Black† 18. Double Solid Hinged Door- Black† 19. Triple Hinged Solid Door - Black† 12. GL009 (& -E -A) 13. GL010 (& -E -A) 14. GL011 (& -E -A) 15. GL012 (& -E -A) 16. GL013 (& -E -A) 17. GL014 (& -E -A) 18. GL015 (& -E -A) 19. GL016 (& -E -A) 20. GL017 (& -E -A)
Application of Territory Legislation & Council Directives(s) Toepassing van Europese Richtlijn(en) • Application de la/des directive(s) du Conseil • Anwendbare EU-Richtlinie(n) • Applicazione delle Direttive • Aplicación de la(s) directiva(s) del consejo	Machinery Directive 2006/42/EC (BS) EN 60335-1:2012 +A11:2014 +A13:2017 +A1:2019 +A14:2019 +A2:2119 +A15:2021 (BS) EN 60335-2-89:2010 +A1:2016 +A2:2017 (BS) EN 62233:2008 Electro-Magnetic Compatibility (EMC) Directive 2014/30/EU - recast of 2004/108/EC (BS) EN IEC 55014-1:2021 (BS) EN IEC 55014-2:2021 (BS) EN IEC 61000-3-2: 2019 (BS) EN 61000-3-3: 2013 +A1:2019 +A2:2021 Eco-design energy-related products Directive 2009/125/EC; Regulation (EU) *2019/2024 - Ecodesign direct sales refrigerators ISO 23953-2:2015 †Regulation (EU) 2015/1095 - Ecodesign professional refrigerators EN 16825: 2016 +A1:2019 Restriction of Hazardous Substances Directive (RoHS) 2015/863 amending Annex II to Directive 2011/65/EU
Electrical Safety AS/NZS 60335.1:2020 AS/NZS 60335.2.89:2020 Electromagnetic Compatibility EN IEC 55014-1:2021 EN IEC 55014-2:2021 EN IEC 61000-3-2: 2019 EN 61000-3-3: 2013 +A1:2019 +A2:2021	
Producer Name • Naam fabrikant • Nom du producteur • Name des Herstellers • Nome del produttore • Nombre del fabricante	Polar

I, the undersigned, hereby declare that the equipment specified above conforms to the above Territory Legislation, Directive(s) and Standard(s).

Ik, de ondergetekende, verklaar hierbij dat de hierboven gespecificeerde uitrusting goedgekeurd is volgens de bovenstaande Richtlijn(en) en Standaard(en).

Je soussigné, confirme la conformité de l'équipement cité dans la présente à la / aux Directive(s) et Norme(s) ci-dessus

Ich, der/die Unterzeichnende, erkläre hiermit, dass das oben angegebene Gerät der/den oben angeführten Richtlinie(n) und Norm(en) entspricht.

Il sottoscritto dichiara che l'apparecchiatura di sopra specificata è conforme alle Direttive e agli Standard sopra riportati.

El abajo firmante declara por la presente que el equipo arriba especificado está en conformidad con la(s) directiva(s) y estándar(es) arriba mencionadas.

Date • Data • Datum • Data • Fecha • Data

Signature • Handtekening • Signature • Unterschrift Firma • Firma

Full Name • Volledige naam • Nom et prénom • Vollständiger Name • Nome completo • Nombre completo

Position • Functie • Fonction • Position • Qualifica • Posición

Producer Address • Adres fabrikant • Adresse du producteur • Anschrift des Herstellers • Indirizzo del produttore • Dirección del fabricante

3rd November 2022

DocuSigned by:

Ashley Hooper
B39382C9FD9C478...

DocuSigned by:

Eoghan Donnellan
D362874F7FAB460...

DocuSigned by:

Brendan Denmeade
D062C5837EB7465...

Technical & Quality Manager

Commercial Manager/Importer

Commercial Manager/ Responsible Supplier

Fourth Way,
Avonmouth,
Bristol,
BS11 8TB
United Kingdom

Unit 9003,
Blarney Business Park,
Blarney,
Co. Cork
Ireland

15 Bagdally Road,
Campbelltown
NSW 2560



POLAR



<http://www.polar-refrigerator.com/> 

GL001-A-GL017-A_GE997-A-GE999-A_A5_v4_2024/03/11